

Our Philosophy

Singing together in an ensemble is a fun and healthy way for students to express themselves and be artistically creative in a safe space with their peers. We strive to achieve a high artistic level as a group while also encouraging all students to challenge themselves individually. We learn about and perform music from a wide variety of cultures, historical periods, and in multiple languages. We use music as a tool to explore our society and our own inner selves, and we share what we find with others through concert performances, contest, and productions. We

foster students' growth in their sense of self and help them become more responsible, caring citizens of their school and their world.



Choral students will also develop skills in music literacy (reading music)!



Kirby

Choral Program

KIRBY SCHOOL DISTRICT #140

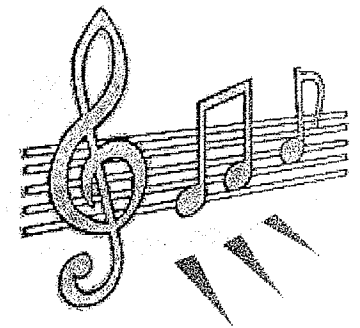
Prairie View Middle School
8500 W. 175th Street
Tinley Park, IL 60487
Phone: 708-532-8540

Virgil I. Grissom Middle School
17000 S. 80th Avenue
Tinley Park, IL 60477
Phone: 708-429-3030

KSD #140 INTRODUCES:

Kirby Choral Program 2011-2012

Directed by Miss Tuazon



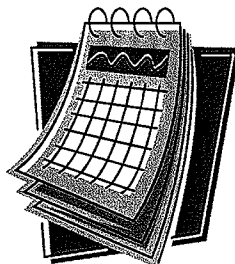
Email: ctuazon@ksd140.org

Weekly Choral Schedule

subject to change, with notice

This year, KSD #140 is consolidating two separate middle school programs to become ONE **District Choral Program!**

This will mean a whole new look and feel to the schedule, which is summarized below. *The schedule will *tentatively* be as follows until April when musical rehearsals start.



Each ensemble will have a certain school "home," where all their rehearsals will be!

Mondays @Grissom

- EXTRA Rehearsal, TBA
- Mostly Small Group Practice

Tuesdays + Thursdays @Grissom

- Symphonic Choir 3:15-4:05pm
- Honors Choir 4:15-5:05pm

Wednesdays + Fridays @Prairie View

- Treble Choir 3:15-4:05pm
- Show Choir 4:15-5:05pm

Additionally, students should expect to rehearse at **TIP time 2-3x per week**, depending on the needs for that week. The TIP schedule will be posted weekly.

Outline of the 2011-2012 Year

The information below is designed to be a quick reference to see what is coming up. Details may shift; you will be notified as this occurs. *Additional performances at Andrew HS, TBA!

August	— Recruit —Begin Voice Placement
September	—Begin Regular Rehearsals —Begin Songbook Project Fundraiser —Kirby Chorus Retreat 9/10 —Uniform Fittings —Parent Meeting 9/21 @G, 7p
October	—IMEA Auditions (see flyer) — Fall Concert 10/12 @G, 7:30p —Recording Sessions 10/13-14
November	—IMEA Festival (see flyer) —Begin Winter Greens Fundraiser
December	— Winter Concert 12/6@PV, 7:30p —Project Snowman Tour, TBA —Optional Caroling, TBA
January	—Lyric Opera Student Matinee, TBA
February	—Begin Century Resources Fundraiser — Solo & Ensemble Contest 2/11
March	— IGSMA District Contest 3/3 — MIOS Showcase 3/7@G, 7:30p — Spring Concert 3/13@G, 7:30p —Audition for Spring Musical
April	—Begin Musical Rehearsals — IGSMA State Contest, if applicable
May	— Spring Musical 5/18@PV, 7:30p

How Will Transportation Work?

Similar to the band program, there will be a shuttle that will run between schools after the school day has concluded, and back again before the Activity bus leaves.

Example Scenario

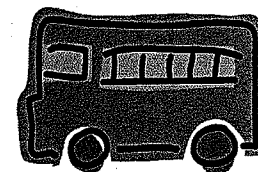
A Grissom student who buses home from school is in the Symphonic Choir, and has rehearsal @Prairie View Tuesday/Thursday.

Solution #1

Student takes the shuttle from Grissom to Prairie View right after school to attend rehearsal at 3:15. Student takes the shuttle at 4:10 from Prairie View back to Grissom to catch the 4:15 Activity Bus.

Solution #2

If the student is ALSO in the Honors Choir that rehearses at 4:15, he/she will stay at Prairie View until 5:05 and **have to find a ride home, as there is no longer a 5:00 bus. Carpooling is great!**



Students need to keep track of what **DAY** it is and be on time for the shuttle!

KIRBY SCHOOL DISTRICT #140

Prairie View Middle School
8500 W. 175th Street
Tinley Park, IL 60487

Grissom Middle School
17000 S. 80th Avenue
Tinley Park, IL 60477